

PROCO

PROCO PRODUCTS, INC.

APPLICATIONS

Water/Waste Water

Sludge Lines

Spherical Type

Series 240/242: Style 240 AV/NN* or 242-A/NN*

[*For applications where heavy mineral oils are present (NP) elastomers must be used]

Rubber Spool Type

Series FA-230: Styles FA-231*, FA-232*, FA-233 *

[*For applications where heavy mineral oils are present (NP) elastomers must be used]

Spherical
Style 240, 242 AV/NN



Air Service

Spherical Type

Blower Lines

Series 240/242: Style 240-AV/EE or 242-A/EE

Aeration Lines

Series 240/242: Style 240-AV or 242-A

Rubber Spool

Style FA-231, FA-232, & FA-232



Low Pressure Water

Spherical Type

Series 240/242: Style 240-AV or 242-A

PTFE Lined
Style 231/BT



High Pressure Water

Rubber Spool Type

Series 230: Styles 231, 232 & 233

Corrosive Service (Caustic or Acidic)

Molded PFA & PTFE Type

Series 440: Style 442-B, 443-B & 445-B

Molded PTFE

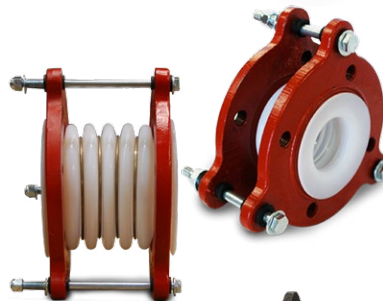
Style 442B, 443B & 445

Spherical Type

Series 240: Style 240-C/NT (positive pressure only)

PTFE & FEP Lined

Series 231/BT (Steel Piping Systems only)



Integral Molded Flanged Wide Arch
Style 261R & 262R



Plastic Piping (PVC, CPVC, FRP & Glass Lined Pipe)

Integral Molded Flanged Wide Arch

Style 261-R

Molded PFA & PTFE Type

Series 440: Style 442-B, 443-B & 445-B

Low Torque Gaskets

Series 9013

Low Torque Gaskets
Style 9013



THE EXPANSION JOINT AND CHECK VALVE PEOPLE

PROCO

PROCO PRODUCTS, INC.

APPLICATIONS

Water/Waste Water
Continued

Odor Control System

Fan/Duct Connectors

Series 500: Styles 501, 520, 530 & 540



Fan / Duct Connectors
Style 520, 530 & 540

Pumps (Pipe size reductions)

Rubber Spool Type

Suction Side (Eccentric Reducing)

Series RE: Style RE-221

Discharge (Concentric Reducing)

Series RC: Style RC-221

Rubber Spool
Style RE-221, & RC-221



Back Pressure Relief

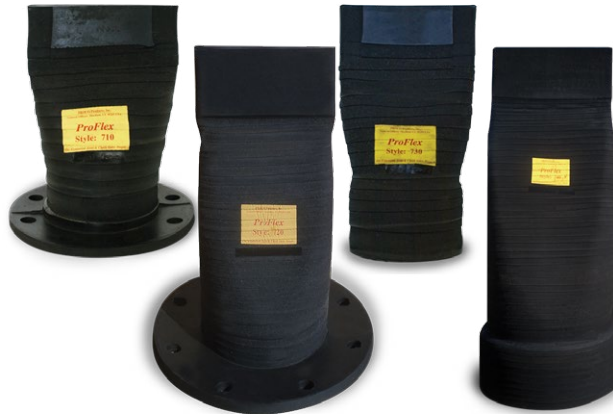
Check Valves

Over Flows, Out Falls, Catch Basins

Series 700: Style 710, 730

Inline Application

Series 700: Style 720, 740



Check Valve
Style 710, 720, 730 & 740

Gas and Water Tight Seal

Pipe Penetration Seal

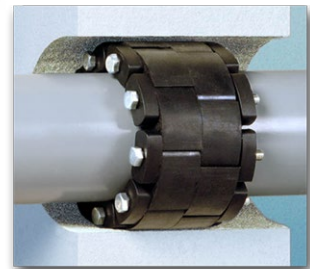
Water Applications

PS/ES, PS/E

Oil or Petroleum

PS/PS, PS/P

Pipe Penetration Seals



DISTRIBUTED BY:

